

QUICK INSTALL GUIDE

TITAN
REMOTE STARTERS



TS133

1-WAY LONG RANGE REMOTE STARTER

For Automatic & Manual Transmission Vehicles

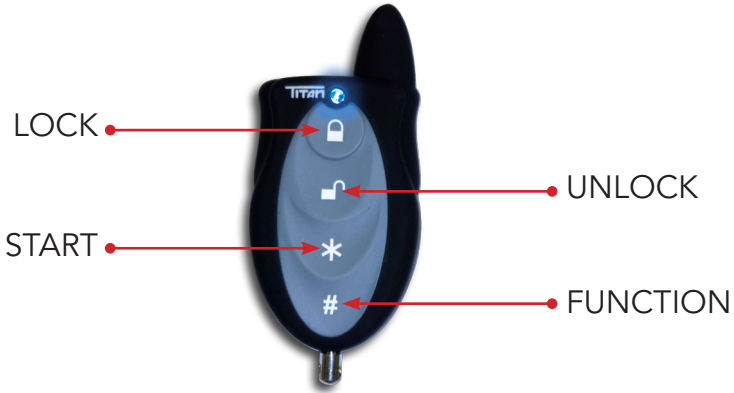
DATA SERIES

POWERED BY
TITAN
INNOVATIONS

www.TitanInnovations.ca



REMOTE TRANSMITTER OPERATION



ACTION	OPERATION
Press Button 1 Once	Locks doors and Arms Titan-Secure (If Alarm features are turned on in Menu M2-3)
Press and Hold Button 1 for 2 Seconds	Remote Panic
Press Button 2 Once	Unlocks doors and Dis-Arms Titan-Secure (If Alarm features are turned on in Menu M2-3)
Press and Hold Button 2 for 2 Seconds	Trunk Release (Doors will also Unlock)
Press Buttons 1 and 2 Together	Sets silent arming/disarming mode (If Titan-Secure Alarm features are turned on in Menu M2-3)
Press Button 3 Once	Remote engine Start On/Off (Start / Stop)
Press Buttons 3 and 4 Together	Remote Timer Start mode On/Off (See Owner's Guide for more details)
Press Button 3 Once (with Engine Running by Key)	Idle Mode (Takeover Mode)
Press Button 4 Once (with Engine Running by Key)	Turbo Mode (Turbo Cooldown Mode)
Press Buttons 1 and 4 Together	Long Aux. Door Lock Function (See Menu M2-6 for options - 15s, 30s, or Latched)
Press and Hold Button 3 for 2 Seconds	Auxiliary Output #1 (See Menu M4-1)
Press and Hold Button 4 for 2 Seconds	Auxiliary Output #2 (See Menu M4-1)

TRANSMITTER LEARNING

Important! The remote starter will hold 4 transmitter codes. It is recommended that when programming in transmitters, you fill up all four transmitter codes, even if only using one or two transmitters. This will clear all other transmitter coding from the unit and prevent stray coding or possible interference from other remote transmitters.

1. Turn ignition ON-OFF-ON-OFF-ON.
2. Press the valet switch (button) in the antenna and hold on, siren/horn (optional) will chirp once, the LED will turn on constantly.
3. Keep on holding the valet switch, siren/horn will chirp 5 times to indicate you have entered transmitter learning mode.
4. Press button 1 (Lock) of every transmitter to be coded. The siren/horn will chirp once and the parking lights will flash once to indicate successfully learning. If only using only 2 transmitters, code in each transmitter twice.
5. Up to 4 transmitters can be learned to each unit, each transmitter must be finished in 8 seconds.
6. Turn ignition OFF and the unit will exit code-learning mode. You will hear one long siren/horn chirp to confirm.

VALET MODE

1. To activate Valet mode, turn ignition ON. Within 10 seconds, press and hold the valet switch for 5 seconds. Parking lights will flash once and siren/horn will chirp 5 times to enter VALET mode. LEDs in the antenna will be constantly ON when the ignition is OFF. When Ignition ON, the LED will turn off.
2. In valet mode, the system can't be armed or remote started, however lock and trunk functions will still operate. If you attempt to start the vehicle in valet mode, the unit will not start and you will get 3 long flashes from the park lights.
3. To disable valet mode: turn ignition ON. Within 10 seconds press and hold the valet switch for 5 seconds. LED will turn OFF, siren/horn will chirp and parking lights will flash twice to indicate exiting valet mode.

SYSTEM RESET

1. Turn ignition ON-OFF-ON-OFF-ON.
2. Press the valet switch once and release. The parking lights will turn on and the siren/horn will chirp once.
3. Press and hold the valet switch on, until the parking lights flash 3 times and the siren/horn will chirp 3 times, which means the system has reset to factory default settings.
4. Turning the ignition key to the off position or 30 seconds of no activity will exit program mode, indicated by a single long siren/horn chirp.

Note: The system reset does not erase transmitter coding, but does reset tach settings.

PROGRAMMING

Turn ignition ON-OFF-ON-OFF-ON.

Press the valet switch once and release. The parking lights will turn on and the siren/horn will chirp once. With the park lights staying on, select a desired Program Menu using the transmitter. Pressing button 1 on the transmitter will select MENU 1; pressing button 2 will select MENU 2; pressing button 3 will select MENU 3; pressing button 4 will select MENU 4. The park lights will flash and the siren/horn will chirp once to confirm the selected menu.

Select Programmable Settings in Sub-Menus (Still in programming mode):

Press and release the Valet (Program) Button the correct number of times to select the desired Sub-Menu. The park lights will flash once each time the programming button is pressed. The LEDs in the antenna will flash and the siren/horn will chirp to indicate which Sub-Menu has been selected. For example: 1 LED flash and 1 chirp= Sub-Menu M1-1; 2 LED flashes and 2 chirps= Sub-Menu M1-2; etc.

Once the correct Sub-Menu has been selected, press and hold the Program Button until the park lights flash and the siren/horn chirps to confirm the desired setting. For example: 1 park light flash and 1 chirp= Setting 1; 2 park light flashes and 2 chirps= Setting 2; 3 park light flashes and 3 chirps= Setting 3. The LEDs will continue to flash indicating which Sub-Menu you are in (Note: LEDs turn off when the programming button is held down).

Turning the ignition key to the off position or 30 seconds of no activity will exit program mode. This will be indicated by a long siren/horn chirp.

PROGRAMMING CHART

MENU 1 (Button 1)		1 FLASH	2 FLASHES	3 FLASHES	4 FLASHES
M1-1	Ignition Auto Lock	Enabled	Lock only	Disabled*	X
M1-2	Door Lock/Unlock options	Double Unlock / Single Lock	Single Unlock/ Lock *	X	X
M1-3	Door Unlock/ Lock Pulse Duration	Unlock/ Lock 1/4s	Unlock/Lock 3 sec.	Unlock 1/4s. Lock 8s.	Unlock/Lock 3/4s*
M1-4	Lock/Unlock type	Type 1	Type 2	Pulse upon unlock press	Normal*
M1-5	Horn Honk	Type 1	Type 2	Type 3	All Horn Honks*
M1-6	Horn Honk Timing Siren Timing / Horn	5ms Output 30s Duration	50ms Output 60s Duration	10ms Output* 30s Duration*	X
M1-7	iData Mode	iDatalink mode	Fortin mode*	X	X
MENU 2 (Button 2)		1 FLASH	2 FLASHES	3 FLASHES	4 FLASHES
M2-1	Safety Start	Press Start 2X	Press Start 1X*	X	X
M2-2	Park Light Output	30s after Unlock	(-) Park light	(+) Park light*	X
M2-3	Car Alarm Features	Alarm Function ON	Alarm Function OFF*	X	X
M2-4	Rearm Output	Type 1	Type 2	Normal Rearm Out*	X
M2-5	Starter Disable (GWR)	GWR Wire Starter Disable	GWR Only	Single Wire Data Output	Negative Horn Output*
M2-6	Long Lock Output	30s	Latched	15s*	X
M2-7	Active/Passive Arm	Passive Arm	Active Arm*	X	X

MENU 3 (Button 3)		1 FLASH	2 FLASHES	3 FLASHES	4 FLASHES
M3-1	Gas Diesel Mode	8s Delay	15s Delay	Gas/Diesel up to 30s*	X
M3-2	Instant Trigger	Off (Glow only)	Single Wire Data Input	Single Wire Input Delay 15s	On (Glow & Inst. Trig)*
M3-3	Run Time	4min	30min	45min	15min*
M3-4	Tach Sensing	4 Cyl Sense	Smart Sense	2 Cyl Sense *	X
M3-5	Ready Mode	Foot Brake	Park Brake	Transmitter*	X
M3-6	Check Mode When Start	High Voltage Checks Mode	Low Voltage Checks Mode	RPM Checking Mode*	X
M3-7	Crank Time Selection	0.6s	0.8s	2s	1s*
MENU 4 (Button 4)		1 FLASH	2 FLASHES	3 FLASHES	4 FLASHES
M4-1	AUX Outputs (Blue & Green/Black wires)	AUX On With Unlock	AUX On Without Unlock	3.5s AUX On With Unlock	Rearm/Disarm as Default*
M4-2	X	X	X	X	X
M4-3	AUX Trunk Wire (Red/White Wire)	Defrost	Drivers Priority (2nd Unlock)	3.5s Trunk Release	Trunk Release*
M4-4	AUX Sensor Use (Only available on alarm)	Internal Only	External Only	Both Sensors*	X

*sign for Factory Default

1. Menu 4 is to program the Rearm Wire (Blue), Disarm wire (Green / Black), GWR Wire (Orange), and Trunk wire (Red / White) for special outputs if so required. The outputs can be used to activate sliding doors, and auxiliary outputs.
2. The Blue rearm wire and the Green / Black disarm wire when programmed for M4-1, they will be activated by either pressing buttons 3 for 2 seconds (Activate Blue) or press and hold button 4 for 2 seconds (Activate Green / Black). They can also be activated when programmed as auxiliaries.

PROGRAMMING MENU SETTING DETAILS

MENU 1 EXPLANATION

Ignition Auto Lock

M1-1 1 Flash	Door Locks will activate Lock when ignition is turned on above 3 seconds and Unlock when the ignition is turned off
M1-1 2 Flashes	Door Locks will only lock when ignition is turned on
M1-1 3 Flashes	Door lock outputs will not activate with ignition input

Door Unlock/Lock Options

M1-2 1 Flash	Double Unlock Pulse and Single Lock Pulse (Timing Controlled by M1-3)
M1-2 2 Flashes	Single Unlock and Lock pulses. (Timing Controlled by M1-3)

Door Unlock/Lock Pulse Duration

M1-3 1 Flash	Door Unlock and Lock Pulses will be ¼ seconds long
M1-3 2 Flashes	Door Unlock and Lock Pulses will be 3 seconds long
M1-3 3 Flashes	Door Unlock pulse will be ¼ second and Door LOCK pulse will be 8 seconds long
M1-3 4 Flashes	Door Unlock and Lock Pulses will be ¾ seconds long

Special Lock /Unlock Functions

M1-4 1 Flash	Unlock before start, lock after start and after shutdown
M1-4 2 Flashes	Lock pulse ONLY after remote start shutdown
M1-4 3 Flashes	Ignition, accessory, and Jumper output (pink/white wire) will output 1 second pulse upon unlock press
M1-4 4 Flashes	Remote start and shutdown without Unlock or Lock output

Horn Honk Settings

M1-5 1 Flash	Arm/Disarm and start chirps Disable - Honks for panic. etc.
M1-5 2 Flashes	Arm/Disarm chirps Enable - No Honks for Start ONLY
M1-5 3 Flashes	Honks only for programming and panic
M1-5 4 Flashes	All Chirps Enable - Honks for all features

Horn Honk Timing

M1-6 1 Flash	5ms Horn Honk duration
M1-6 2 Flashes	50ms Horn Honk duration
M1-6 3 Flashes	Alarm sounds for 30 seconds

Timing/Horn (alarm starter) Siren**

M1-6 1 Flash	Horn Pulsed output
M1-6 2 Flashes	Alarm sounds for 60 seconds
M1-6 3 Flashes	10ms Horn Honk duration

iData Mode

M1-7 1 flash	iDatalink Mode
M1-7 2 flashes	Fortin Mode

MENU 2 EXPLANATION

Safety Start

M2-1 1 Flash	Press Start button 2X within 3 seconds to activate remote start
M2-1 2 Flashes	Press Start Button 1X to activate remote start

Park Light /Trunk Output

M2-2 1 Flash	Park light output will stay active for 30 seconds after the Unlock button is pressed
M2-2 2 Flashes	Park light output becomes negative on the Red / White wire and Trunk release output becomes positive on the White wire
M2-2 3 Flashes	No special functions with regard to Park light and Trunk Outputs

Car Alarm Features

M2-3 1 Flash	Alarm function ON (Active or Passive arming and locking controlled by M2-7)
M2-3 2 Flashes	Alarm function OFF (Default): turn off all car alarm security functions (If door locked, led flashes. If door unlocked, led OFF. If in valet mode, led will keep constant ON.)

Rearm Output Functions

M2-4 1 Flash	Rearm wire will Pulse after start and with lock and shutdown
M2-4 2 Flashes	Rearm wire will pulse after start only
M2-4 3 Flashes	Rearm wire will only pulse after remote start shutdown
M2-4 4 Flashes	Rearm wire pulses with lock, and after remote start shutdown

Starter Disable/GWR Functions (orange wire)

M2-5 1 Flash	GWR wire acts like Starter Disable /Anti-grind and is active when locked or remote starter. Passive /Active controlled by M2-7
M2-5 2 Flashes	GWR is active only when remote starter is active
M2-5 3 Flashes	Single wire data output
M2-5 4 Flashes	Negative Horn output 300mA (default) (timing and duration controlled by M1-6)

Long Lock Output

M2-6 1 Flash	Lock output will activate for 30 seconds if buttons 1 and button 4 are pressed together on T96 style remotes OR button 4 THEN button 1 on T85 & T99 style remotes
M2-6 2 Flashes	Latched Lock output will activate until ANY other input is received from the transmitter
M2-6 3 Flashes	Lock output will activate for 15 seconds if buttons 1 and button 4 are pressed together on T96A

Active/Passive Arm

M2-7 1 Flash	Passive Arming - (-) When locked or Passive arming and during remote start
M2-7 2 Flashes	Active - (-) When locked and during remote start (Anti Grind).

Passive Arming

When alarm is disarmed, If ACC is not turned ON / doors are not opened, 30sec later, the system will be automatically rearmed with door lock. (AUTO RE-ARMING) Turn ignition ON, then OFF and close the last door. After 30 seconds, the system will arm automatically or arm with door lock. (LAST DOOR ARMING)

MENU 3 EXPLANATION

Gas/Diesel Mode

M3-1 1 Flash	Remote Starter will delay 8 seconds with ignition on before cranking
M3-1 2 Flashes	Remote Starter will delay 15 seconds with ignition on before cranking
M3-1 3 Flashes	Remote Starter will delay 3.5 seconds with ignition on before cranking Unit will delay for a maximum of 30 seconds if the glow plug wire input is grounded during ignition on

Instant Trigger Input

M3-2 1 Flash	Glow plug line will not instant trigger for start
M3-2 2 Flash	Single wire data input
M3-2 3 Flash	Single wire data input with 15 second diesel engine time delay
M3-2 4 Flashes	Glow plug line will function as instant trigger to start and Glow plug input

Run Time

M3-3 1 Flash	Remote Starter will run for 4 minutes maximum
M3-3 2 Flashes	Remote Starter will run for 30 minutes maximum
M3-3 3 Flashes	Remote Starter will run for 45 minutes maximum
M3-3 4 Flashes	Remote Starter will run for 15 minutes maximum

Tach Sensing

M3-4 1 Flash	Remote starter will detect 4 cylinder pulses
M3-4 2 Flashes	Remote starter will sense by altering tach pulse frequency
M3-4 3 Flashes	Remote starter will detect 2 cylinder pulses

*** Add Auto Tachless Mode ***

(When ready mode was selected, please power off and power on, otherwise unit will not store the settings)

Ready Mode Set Up

M3-5 1 Flash	Park Brake applied and press foot brake 2X for ready mode set. Vehicle will shut down when door shut
M3-5 2 Flashes	Park Brake ready mode set up. Apply park brake and unit goes into ready mode, Vehicle will shut down when door closed
M3-5 3 Flashes	Press button on transmitter to activate ready mode. Remove keys and exit vehicle. When Start button pressed for three seconds, vehicle will shut down and lock. (If lock button pressed, unit will stay running)

Check Mode When Start

M3-6 1 Flash	High voltage checks mode. Remote starter detect vehicle start on or not according to voltage of vehicle, only voltage increase more than 0.5V, remote start consider vehicle start success
M3-6 2 Flash	Low voltage checks mode. Remote starter detect vehicle start on or not according to voltage of vehicle, if voltage is more than or equal ACC OFF voltage, remote start consider vehicle start success
M3-6 3 Flash	Rpm checking mode. Remote starter detect vehicle start on or not according to RPM of vehicle, only RPM is higher or equal to RPM learned. Remote start consider vehicle start success

Crank Time Selection

M3-7 1 Flash	0.6s. In Voltage check mode, start wire output time is 0.6s
M3-7 2 Flash	0.8s. In Voltage check mode, start wire output time is 0.8s
M3-7 3 Flash	2s. In Voltage check mode, start wire output time is 2s
M3-7 4 Flash	1s. In Voltage check mode, start wire output time is 1s

MENU 4 EXPLANATION

Blue & Green/Black as AUX Out

M4-1 1 flash	Press and hold button 3 for 2 seconds, there will be an unlock pulse followed by a .75 second output pulse from the Blue re-arm wire. Press and hold button 4 for 2 seconds, there will be an unlock pulse followed by a .75 second output pulse from the Green / Black disarm wire
M4-1 2 Flash	Press and hold button 3 for 2 seconds, there will be a .75 second pulse from the Blue re-arm wire. Press and hold button 4 for 2 seconds, there will be a .75 second output pulse from the Green / Black disarm wire
M4-1 3 Flash	If Button 3 is pressed and held, there will be an unlock pulse followed by a 3.5 second output pulse from the Blue re-arm wire. If Button 4 is pressed and held, there will be an unlock pulse followed by a 3.5 second output pulse from the Green / Black disarm wire
M4-1 4 Flash	Wires operate as default re-arm and disarm output. (Default)

Red/White as AUX Out

M4-3 1 Flash	Red / White trunk release output will operate as a defrost output and provide a 1.5 seconds pulse 30 seconds after the vehicle remote starts.
--------------	---

M4-2 2 Flash	Red / White trunk release output will operate as a drivers priority output and provide a 1.5 seconds pulse with a second press of the unlock button on the remote. This second button press must be within 5 seconds of the first for the output to happen. This output takes precedence over negative park light switchover in program M2-2. In other words if this output is programmed as drivers door priority, polarity will be negative and will park light output will go back to positive. At this point an installer would have to use a relay for negative park lights
M4-3 3 Flash	Red/White trunk release will output a 3.5 second pulse as its output
M4-3 4 Flash	Red / White trunk release output operates as its default output. Alarm sensor use (only available on alarm starter units)
M4-4 1 Flash	Internal Shock sensor used only
M4-4 2 Flashes	External Sensor input used only
M4-4 3 Flashes	Both Sensors used

Rearm Output Line (BLUE)

1.5 seconds pulse output when LOCK button is pressed and start remote start shutdown. Used for factory alarm re-arm. Observe that this output comes on at the end only after all the other output have shutdown.

Disarm Output Line (GREEN/BLACK)

0.75 second pulse when and is UNLOCK button is pressed and before remote starting. Used for factory alarm disarm. This wires pulses before any other output comes on except the parking lights.

Wait To Start Line (GREY/BLACK)

It is for Diesel Engine. The line should be connected to Wait To Start LED light and will hold Cranking until input off. (There is a warming time before Diesel Engine starting. Wait To Start light turn off when warming finished and ready to start.)

TACH LEARNING (The Tach wire must be connected to a good tach source)

1. Start the vehicle with the key.
2. Press foot brake and hold down.
3. Within 10 seconds, press and release the valet switch then press and hold it for at least 2 seconds. The unit will enter Tach Learning Mode.
4. If a viable tach signal is detected then it is put in memory and learning is confirmed by 2 park light flashes and 2 horn/siren/horn (optional) chirps.
5. If no Tach signal is detected, the parking light will flash and the siren/horn will chirp 3 times.

MANUAL TRANSMISSION LOOP

The wire loop on the module determines if the module works as an automatic transmission remote starter or a manual transmission remote starter. The default setting with the loop uncut is manual transmission operation. It is the responsibility of the installer to ensure that the loop is connected if the remote starter is being installed into a manual transmission vehicle. If the remote starter is to be used in an automatic transmission vehicle, you must cut the loop for normal operation. If the loop is not cut, the user will have to put the remote into READY MODE every time they use it.

NEVER INSTALL A UNIT WITH THE LOOP CUT INTO A MANUAL TRANSMISSION VEHICLE. SERIOUS INJURY OR DEATH COULD RESULT. TITAN INNOVATIONS WILL NOT BE RESPONSIBLE FOR ANY INJURIES OR DEATH RESULTING FROM AN INCORRECTLY INSTALLED REMOTE STARTER. IF THE LOOP HAS BEEN CUT OR TAMPERED WITH IN ANY WAY AND THE UNIT IS INSTALLED IN A MANUAL TRANSMISSION VEHICLE, TITAN ACCEPTS NO RESPONSIBILITY FOR ANY INJURIES RESULTING FROM ANY ACCIDENTS.

PLEASE NOTE: If you have a unit that was previously installed in an automatic transmission vehicle and the loop has been cut and you would like to install it into a manual transmission vehicle, please contact Titan Innovations and we would be happy to EXCHANGE the unit for you free of charge for a new unit with the loop intact and not tampered with.

MANUAL TRANSMISSION - READY MODE

To remote start the vehicle, you must first place the system in READY MODE. There are 3 different programming options for doing this. To use a method other than the default setting, you must have your system re-programmed by an Authorized Dealer.

Default -Transmitter Activation

With the engine running and the transmission in Neutral, apply the parking brake.
Press and release the Start button on the remote transmitter.
Turn off key and remove from the ignition (the vehicle will stay running).
Exit the vehicle and make sure all doors are closed.
Press the Start button on the transmitter to shut the vehicle off.
The vehicle is now in READY MODE and can be started by remote.

Option 2 - Brake Pedal Activation

With the engine running and the transmission in Neutral, apply the parking brake.
Press and release the brake pedal 2 times (once if it was already on when you applied the park brake in step 1).
Turn off key and remove from the ignition (the vehicle will stay running).
Exit the vehicle, upon closing the last door, the vehicle will shut down.***
The vehicle is now in READY MODE and can be started by remote.

Option 3 - Park Brake Activation

With the engine running and the transmission in Neutral, apply the parking brake.
Turn off key and remove from the ignition (the vehicle will stay running).
Exit the vehicle, upon closing the last door, the vehicle will shut down.***
The vehicle is now in READY MODE and can be started by remote.

REMOTE STARTING - ALL MANUAL TRANSMISSION MODES

With the engine off, press the Start button.

The park lights will flash and the horn will chirp once (if connected).

The vehicle's ignition system will come on and within 3 seconds, the vehicle will start.

The parking lights will flash 5 times to confirm a successful start.

The vehicle will run for the programmed runtime (15 minutes default).

If the vehicle does not start, see the diagnostics section on the next page for possible solutions.

If you press the Start button on the transmitter while the door is open, the system will go into IDLE MODE and not shut down when you close the door. It will run for the programmed run time or until it is shut down by the remote. This feature is convenient if you need to open other doors after having closed yours.

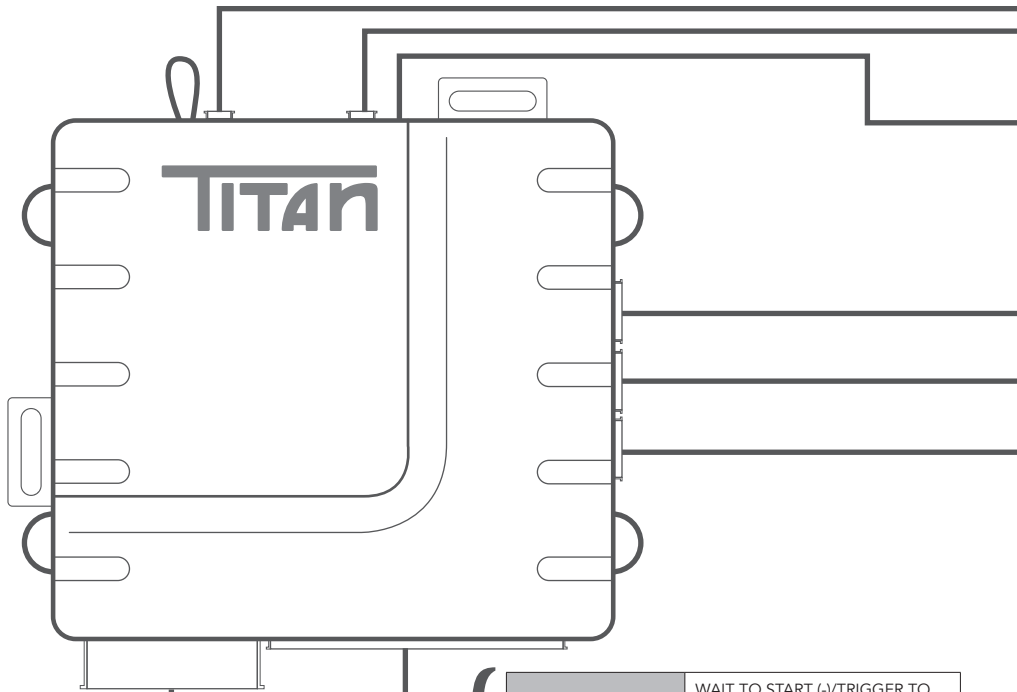
IMPORTANT: If a door is opened while the vehicle is not running and in READY MODE, the system will exit READY MODE and will not remote start. You will need to start the vehicle with the key and repeat the procedure. If you need to open doors and want to avoid repeating the READY MODE setup again, simply remote start the vehicle and open the door while the vehicle is running. When you are done, and the doors are closed, you can shut down the vehicle with the remote and READY MODE will still be engaged.

DIAGNOSTICS

If the remote starter does not activate when the Start button is pressed, the park lights will flash a diagnostic code to indicate what shutdown input has been triggered.

PARKING LIGHT FLASHES	REASON
3 Slow Flashes	In SERVICE MODE
4 Flashes	Not in READY MODE/Door Open (Manual Transmission Only)
5 Slow Flashes	Ignition On
5 Flashes	Brake Pedal is On
6 Flashes	Hood Open
7 Flashes	Tach Lockout or Tach No Learned

WIRING DIAGRAM on next page...



GRAY/BLACK	WAIT TO START (-)/TRIGGER TO START (-)/BB DATA IN
PURPLE/WHITE	TACH DETECTION (AC)
PINK	BRAKE SWITCH INPUT (+)
BLACK	SYSTEM GROUND
GREEN	DOOR PIN INPUT (-)
GRAY	HOOD PIN INPUT (-)
WHITE	PARKLIGHTS (+) OR TRUNK (+) SEE PROGRAM MENU M2-2
PURPLE	DOOR PIN INPUT (+)
BLACK/WHITE	PARK BRAKE INPUT (-) MANUAL TRANSMISSION ONLY
BROWN	SIREN OUTPUT (+)
ORANGE	HORN OUTPUT/GWR/STARTER KILL (-)/BB DATA OUT
GREEN/BLACK	DISARM/AUX OUT (-300mA)
RED/WHITE	TRUNK OPEN (-) OR PARK LIGHTS (-) SEE PROGRAM MENU M2-2
BLUE	REARM/AUX OUT (-300mA)

RED	+12V
RED	+12V
PURPLE	START
PINK/WHITE	(selectable)*
PINK	IGNITION 1
ORANGE	ACC

SST ANTENNA/PC CABLE INPUT

AM/FM ANTENNA

MANUAL TRANS. JUMPER LOOP

J1

J2

J3

FUNCTION	JUMPER POSITION
Start signal output when remote start	JP1
Accessory output when remote start	JP2
Ignition signal output when remote start	JP3
Manual Trans. (MT) Wire Loop	Uncut - MT/Cut - AT

*The output on the PINK/WHITE wire is determined by the position of the jumper

+ 12V

GROUND

RX

TX

RED +12V OUTPUT

BLACK GROUND OUTPUT

WHITE/VIOLET GROUND WHEN RUNNING OUTPUT

BLUE DOOR UNLOCK OUTPUT

EMPTY

GREEN DOOR LOCK OUTPUT

TS133

POWERED BY
TITAN
INNOVATIONS



Please visit www.TitanInnovations.ca for more information

This unit is covered by a Manufacturers Warranty.
Please refer to your Owner's Manual for details.

Revision 1.01